

Retail Space for Lease

BYRAM
REAL ESTATE

16583 W. 151st Street, Olathe, KS 66062



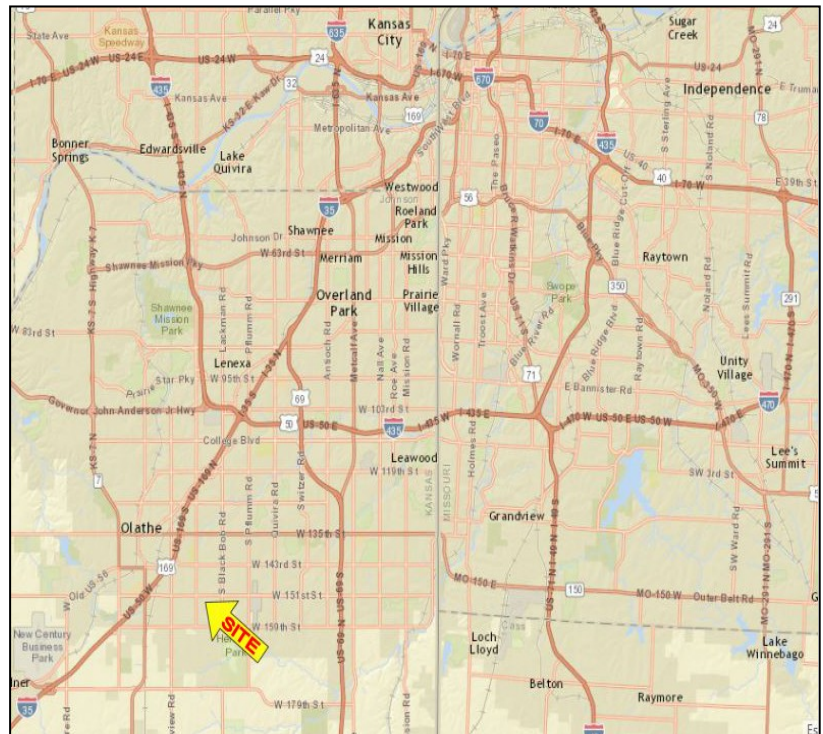
OVERVIEW

- 1,000 – 3,400 +/- SF Available
- 26,440 Cars/Day on 151st Street
- High Growth Area
- Tenant Finish Available
- >\$112,000 Household Income within One Mile

DEMOGRAPHICS

Radius	1 Mile	3 Miles	5 Miles
Population	16,838	71,915	156,848
Avg. HH Income	\$112,331	\$100,940	\$106,615

2015 Estimate

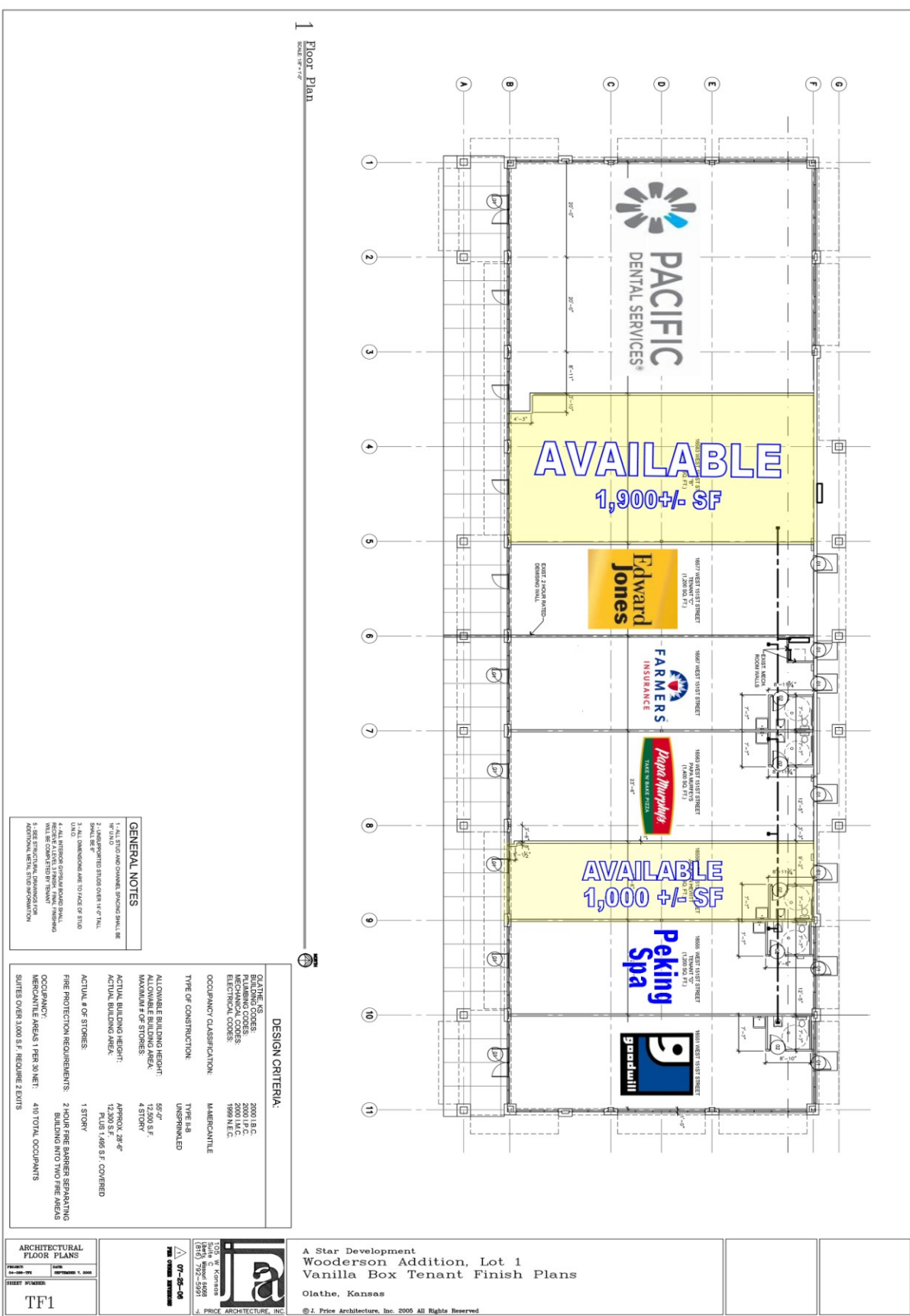


All Information furnished regarding property for sale or lease is from sources believed to be reliable, but we cannot guarantee the accuracy thereof, and same is submitted subject to errors, change of price, or other conditions, or withdrawal without notice.

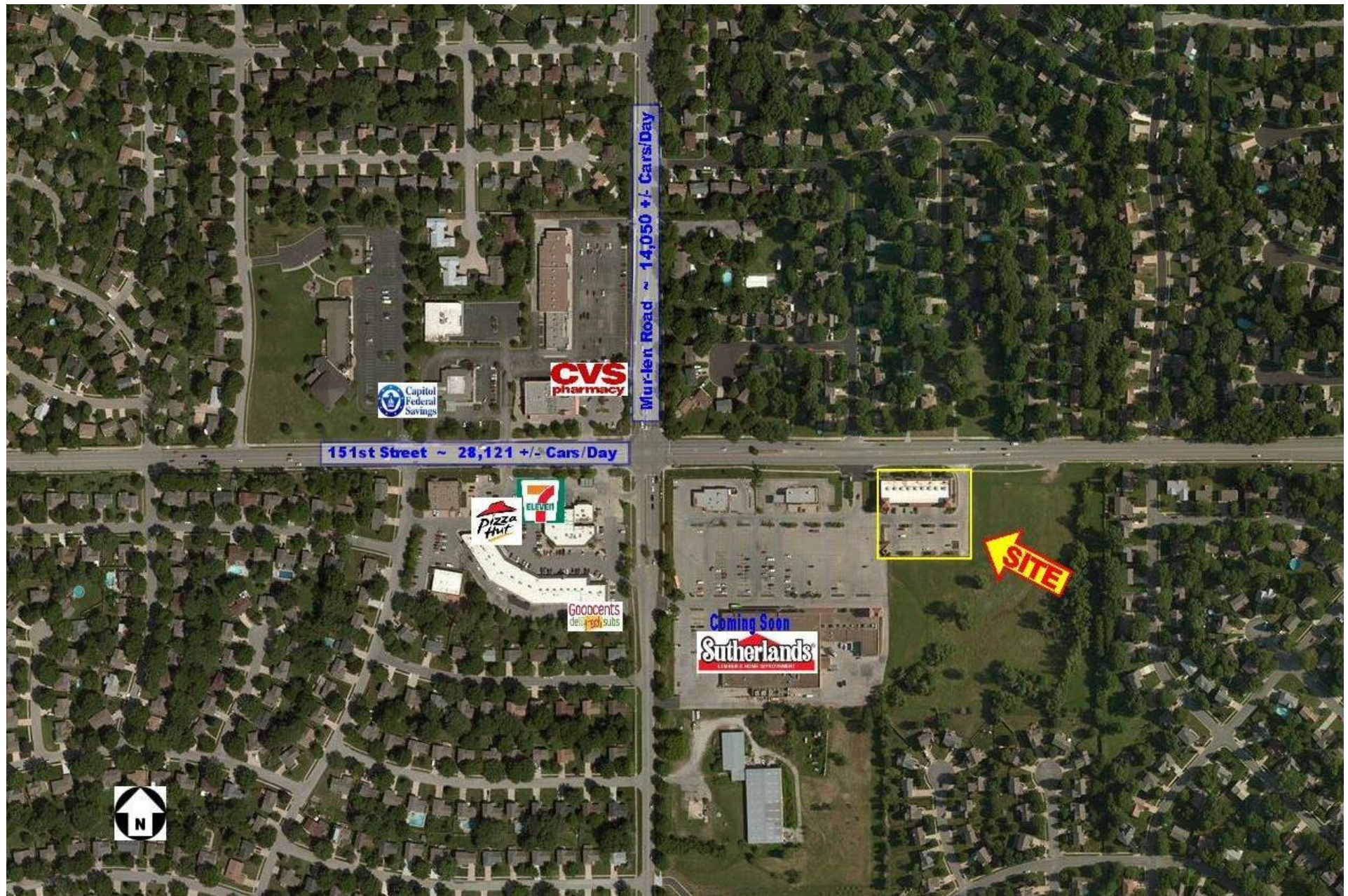
CONTACT:
John Byram
(913) 722-5229

BYRAM REAL ESTATE
5350 W. 94th Terr., Suite 201, Prairie Village, KS 66207
Phone (913) 722-5229 / Fax (913) 722-0909
Email ~ John@ByramRE.com / www.ByramRE.com

FLOOR PLAN – 16583 W. 151st Street, Olathe, KS 66062



AERIAL – 16583 W. 151st Street, Olathe, KS 66062





Executive Summary

Heritage Square
16551 W 151st St, Olathe, Kansas, 66062
Rings: 1, 3, 5 mile radii

Prepared by Esri
Latitude: 38.85480
Longitude: -94.77658

	1 mile	3 miles	5 miles
Population			
2000 Population	14,911	50,039	111,811
2010 Population	16,642	69,072	148,724
2015 Population	16,838	71,915	156,848
2020 Population	17,327	75,458	166,188
2000-2010 Annual Rate	1.10%	3.28%	2.89%
2010-2015 Annual Rate	0.22%	0.77%	1.02%
2015-2020 Annual Rate	0.57%	0.97%	1.16%
Race and Ethnicity			
2015 White Alone	86.1%	81.9%	81.8%
2015 Black Alone	4.7%	5.7%	5.6%
2015 American Indian/Alaska Native Alone	0.4%	0.4%	0.4%
2015 Asian Alone	4.4%	5.2%	5.4%
2015 Pacific Islander Alone	0.0%	0.1%	0.1%
2015 Other Race	1.2%	3.6%	3.7%
2015 Two or More Races	3.1%	3.1%	3.1%
2015 Hispanic Origin (Any Race)	5.7%	9.6%	9.4%
Households			
2000 Households	4,682	17,102	38,433
2010 Households	5,452	23,764	52,391
2015 Total Households	5,547	24,681	55,359
2020 Total Households	5,720	25,873	58,701
2000-2010 Annual Rate	1.53%	3.34%	3.15%
2010-2015 Annual Rate	0.33%	0.72%	1.06%
2015-2020 Annual Rate	0.62%	0.95%	1.18%
2015 Average Household Size	3.04	2.88	2.81
Median Household Income			
2015 Median Household Income	\$91,028	\$81,852	\$84,516
2020 Median Household Income	\$100,210	\$92,242	\$95,464
2015-2020 Annual Rate	1.94%	2.42%	2.47%
Average Household Income			
2015 Average Household Income	\$112,331	\$100,940	\$106,615
2020 Average Household Income	\$123,451	\$113,544	\$119,788
2015-2020 Annual Rate	1.91%	2.38%	2.36%
Per Capita Income			
2015 Per Capita Income	\$37,029	\$35,042	\$37,725
2020 Per Capita Income	\$40,780	\$39,381	\$42,402
2015-2020 Annual Rate	1.95%	2.36%	2.36%
Housing			
2000 Total Housing Units	4,781	17,616	39,727
2000 Owner Occupied Housing Units	4,457	12,712	28,006
2000 Renter Occupied Housing Units	225	4,390	10,427
2000 Vacant Housing Units	99	514	1,294
2010 Total Housing Units	5,575	24,905	55,000
2010 Owner Occupied Housing Units	5,162	17,574	37,722
2010 Renter Occupied Housing Units	290	6,190	14,669
2010 Vacant Housing Units	123	1,141	2,609
2015 Total Housing Units	5,627	25,868	58,005
2015 Owner Occupied Housing Units	5,179	17,650	38,404
2015 Renter Occupied Housing Units	368	7,031	16,955
2015 Vacant Housing Units	80	1,187	2,646