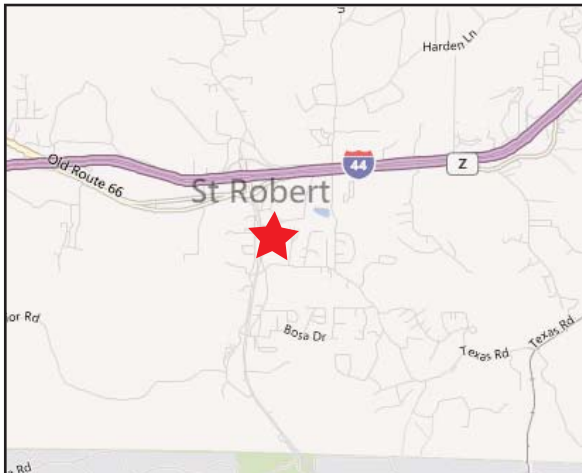


Liberty Commons Development

AVAILABLE

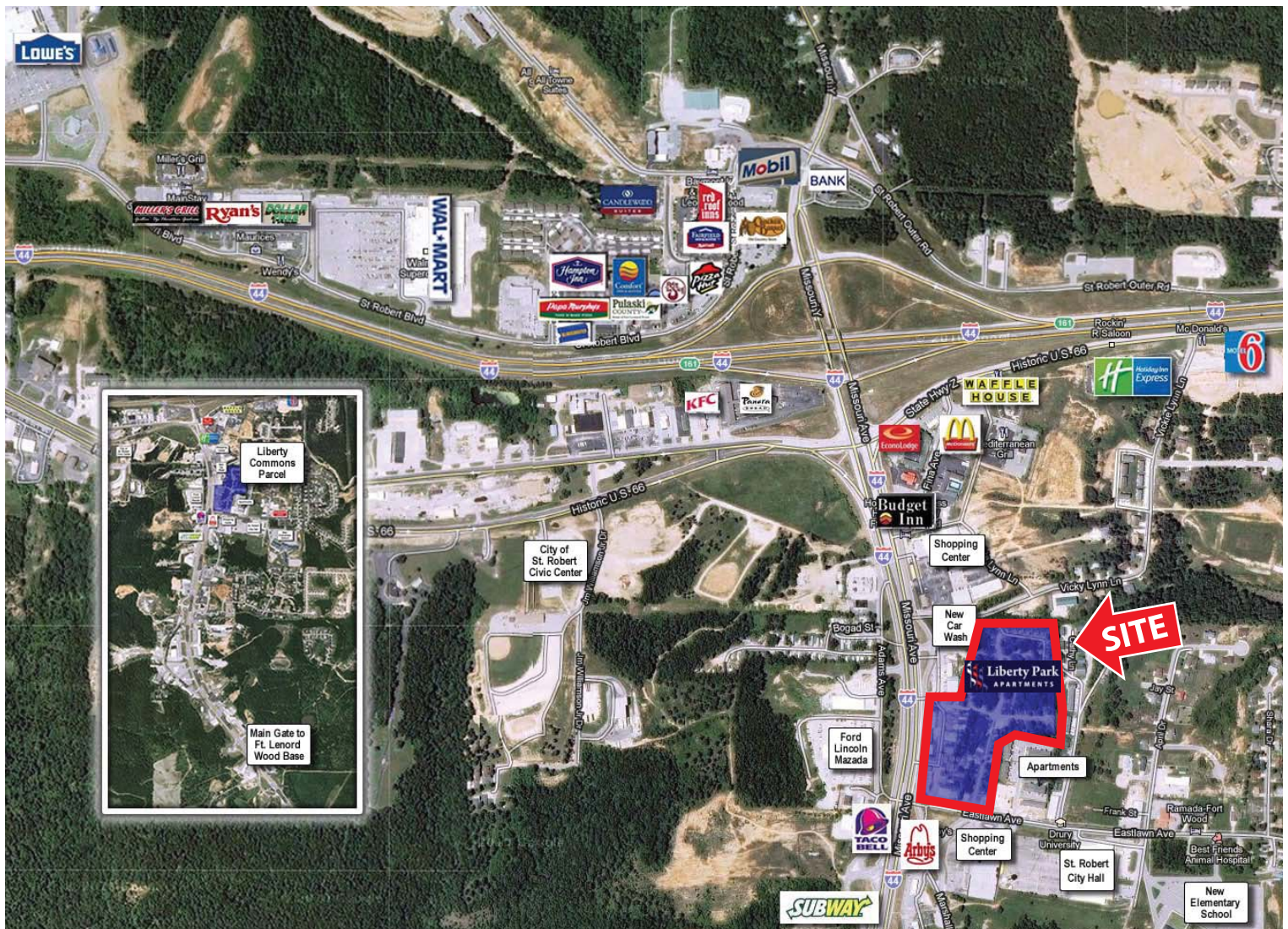
NEC of I-44 & Eastlawn Ave - St. Robert, MO

www.libertycommonsmo.com



- 16 acres m/l of prime redevelopment
- Located between I-44 and main gate entrance to Ft. Leonard Wood
- The Gateway to Fort Leonard Wood on direct route between St. Louis and Springfield, MO
- Across the street from City Hall

	3 miles	5 miles	10 miles
POP.	12,651	31,767	42,994
HH	4,361	8,247	11,853
AVG. HH \$	38,229	46,214	49,163
DAY POP.	12,600	32,210	39,661



For More Info Contact: Brad Thessing at bthessing@tcpllc.org or
Kevin Guffey at kevin@americanrealtymo.com

Thessing Commercial Realty | 8410 Interlochen Dr. | Fremont Hills, MO 65714
417-860-7449 (o) 573-673-1479 (c) 866-395-5054 (f)
bthessing@tcpllc.org www.thessingcommercialrealty.com

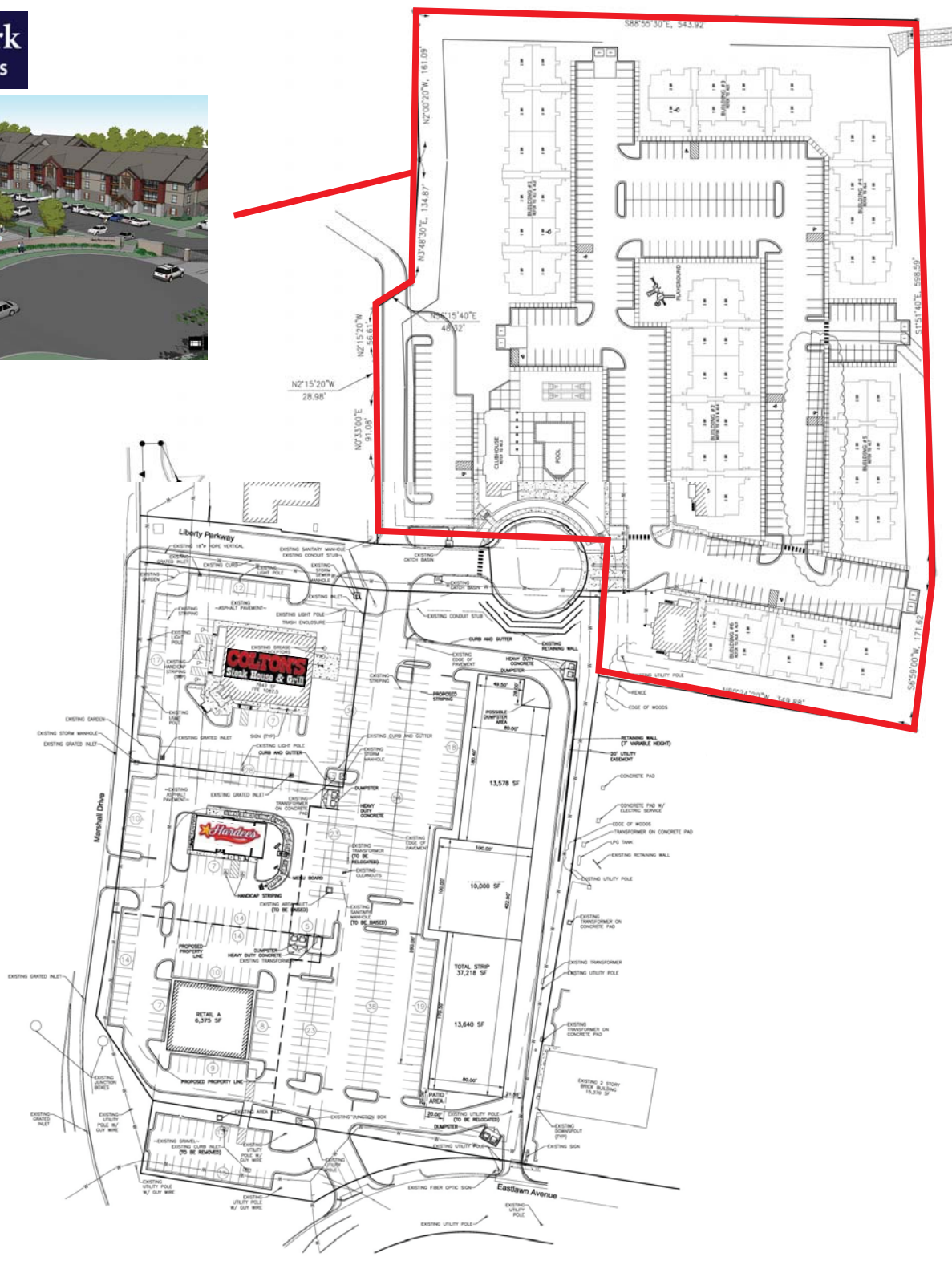


Liberty Commons Development

AVAILABLE

NEC of I-44 & Eastlawn Ave - St. Robert, MO

www.libertycommonsmo.com



For More Info Contact: Brad Thessing at bthessing@tcpllc.org or
Kevin Guffey at kevin@americanrealtymmo.com

Thessing Commercial Realty | 8410 Interlochen Dr. | Fremont Hills, MO 65714
417-860-7449 (o) 573-673-1479 (c) 866-395-5054 (f)
bthessing@tcpllc.org www.thessingcommercialrealty.com

