

1233 EAGLES LANDING PARKWAY

McDONOUGH, GA



OFFICE SUITES

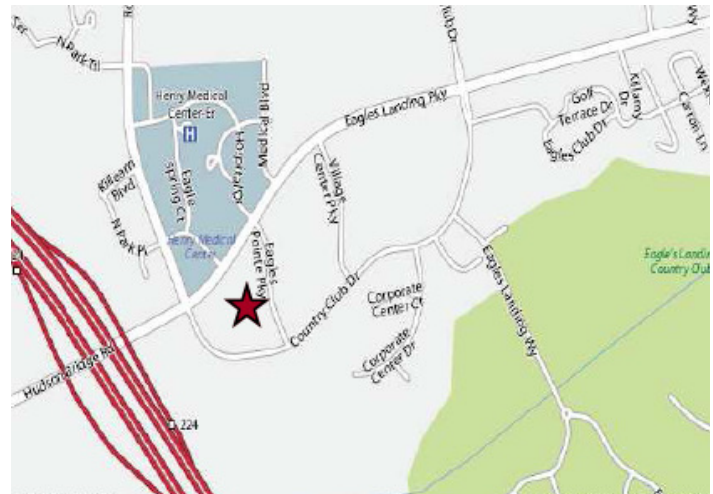
HIGHLIGHTS

Suite AB 2,500 SF

- Professional Road Frontage Double Suite
- 9 Offices
- Large Conference Room
- Reception Area & Waiting Room
- 2 Restrooms
- Break room
- Copy Area
- Sit down waiting area
- Wet Bar for Clients

Suite J 1,250 SF

- Former Dentist Office
- Ready to move in
- 4 Exam Rooms
- Dental Station
- Reception Area & Waiting Room
- Private Office



ATLANTA SOUTH
COMMERCIAL PROPERTIES, INC.

E-mail: info@atlantasouthinc.com

Website: www.atlantasouthinc.com

FOR MORE INFORMATION CONTACT

Tom H. Ellis

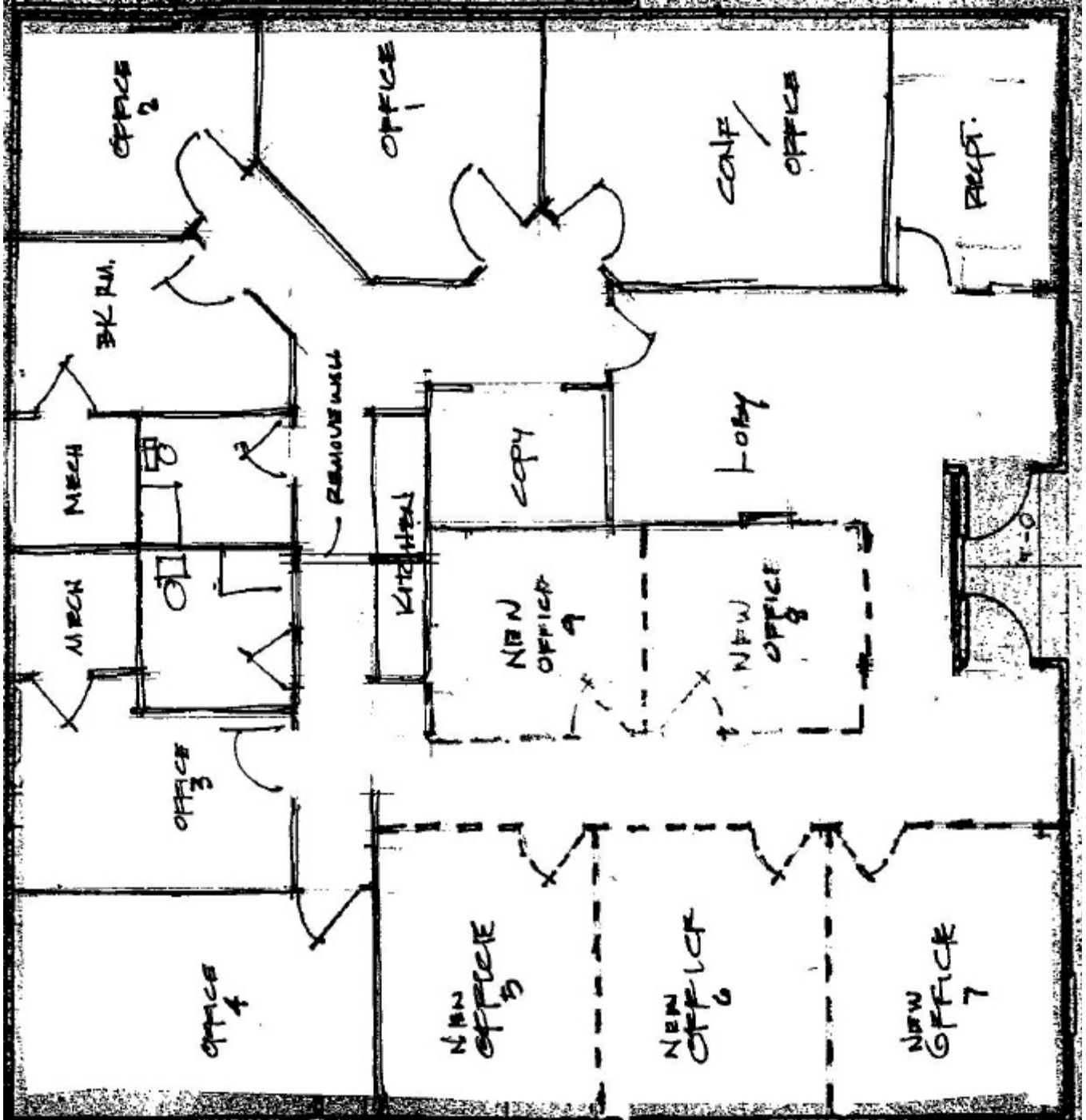
245 Country Club Drive Suite 300D

Stockbridge, GA 30281

Phone: 770-507-5155

1233 EAGLES LANDING PARKWAY

SUITE AB 2,500 SF

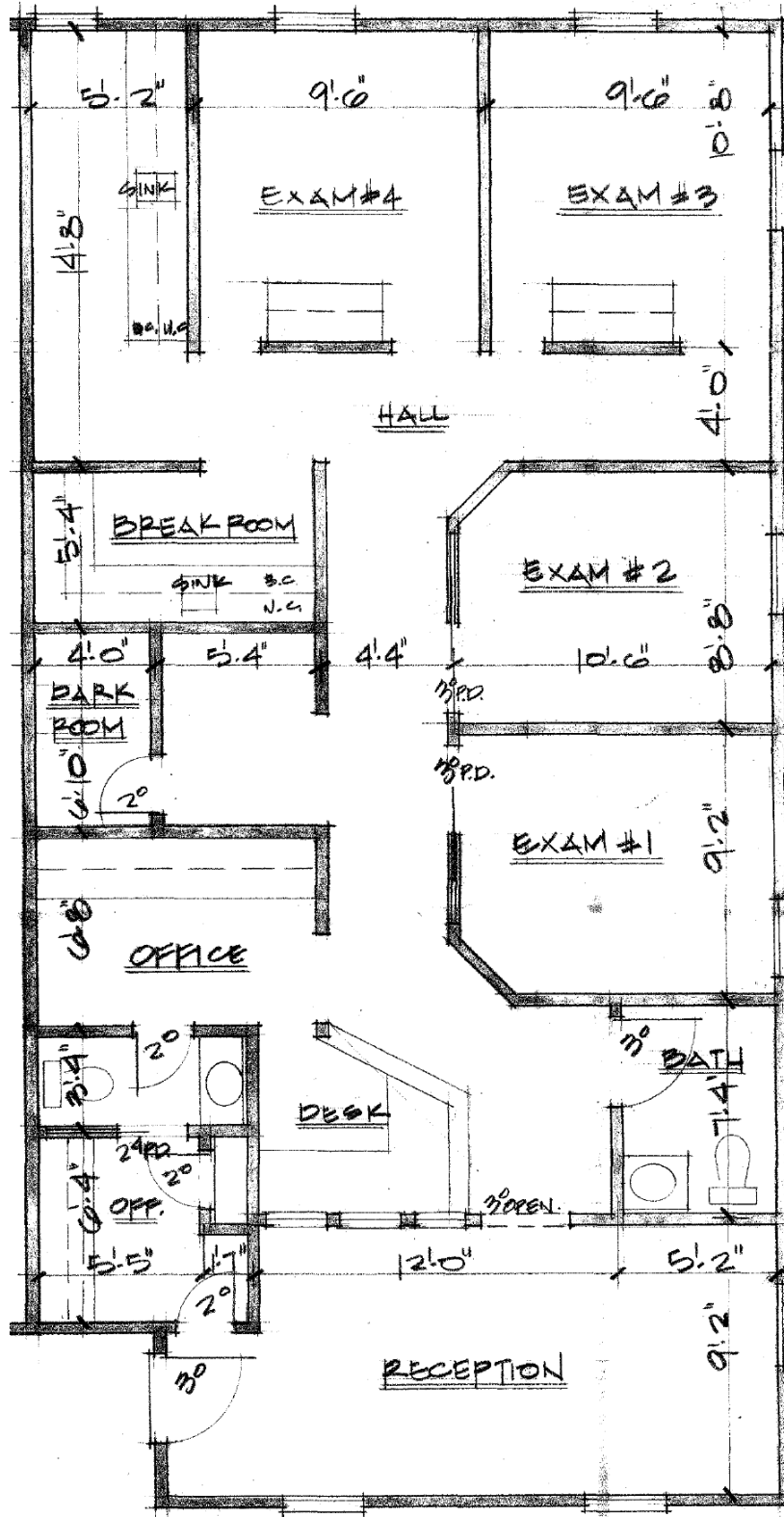


ATLANTA SOUTH
COMMERCIAL PROPERTIES, INC.

The information contained herein is reliable. While Atlanta South Commercial Properties, Inc. has no reason to doubt its accuracy, we do not guarantee it.

1233 EAGLES LANDING PARKWAY

SUITE J 1,500 SF



ATLANTA SOUTH
COMMERCIAL PROPERTIES, INC.

The information contained herein is reliable. While Atlanta South Commercial Properties, Inc. has no reason to doubt its accuracy, we do not guarantee it.