



For Sublease

Class A office space

- 19,730 rentable square feet (full floor only)
- Below market rental rate
- Available immediately
- Plug-n-play with furniture available
- Sublease term through April 30, 2022
- 3.50/1,000 s.f. covered parking ratio
- Beautiful water views of the Bay area
- Suite opens to five balconies

Island Center
2701 N. Rocky Point Drive
Tampa, Florida 33607

Caleb Lewis
+1 813 387 1289
caleb.lewis@am.jll.com

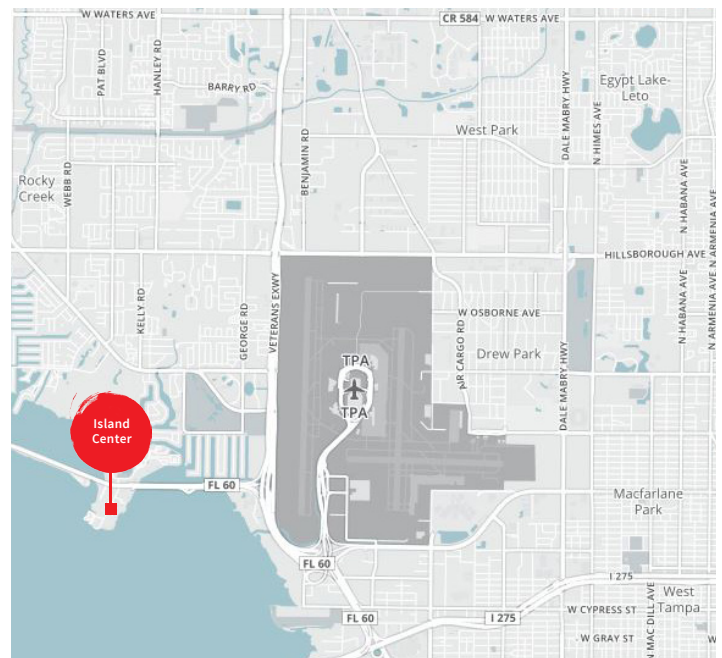
Gary Godsey
+ 1 813 387 1306
gary.godsey@am.jll.com





Building amenities

- 12 story, Class A office building
- Located in the heart of Rocky Point Business District
- Fitness center with lockers and showers
- Building conference room
- 24-hour professional security services
- Nature's Table Cafe on-site



DISCLAIMER

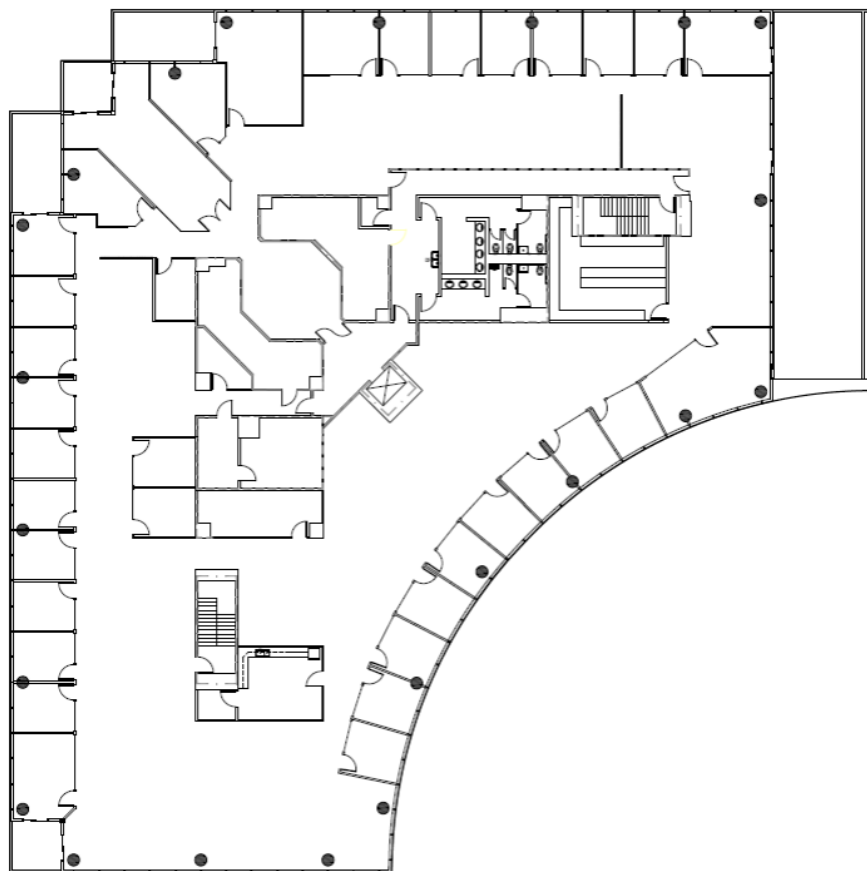
©2017 Jones Lang LaSalle IP, Inc. All rights reserved. All information contained herein is from sources deemed reliable; however, no representation or warranty is made to the accuracy thereof.





For Sublease

Island Center, floor 12 (19,730 s.f.)



DISCLAIMER

©2017 Jones Lang LaSalle IP, Inc. All rights reserved. All information contained herein is from sources deemed reliable; however, no representation or warranty is made to the accuracy thereof.

