

# WESTCHASE PARK

FOR LEASE: 2,173 SF Office | Warehouse Space



OFFICE/WAREHOUSE SPACE > WEST MARKET

## PROPERTY FEATURES

- ⌚ Master-planned environment
- ⌚ Conveniently located near Richmond and Beltway 8
- ⌚ Excellent accessibility
- ⌚ Separate parking and loading areas
- ⌚ 100% Office space
- ⌚ Professionally managed landscaping
- ⌚ Strong institutional owner
- ⌚ Strong corporate identity



3120 Rogerdale Road | Suite 120 | Houston, TX 77042

PROJECT OF



LEASING BY

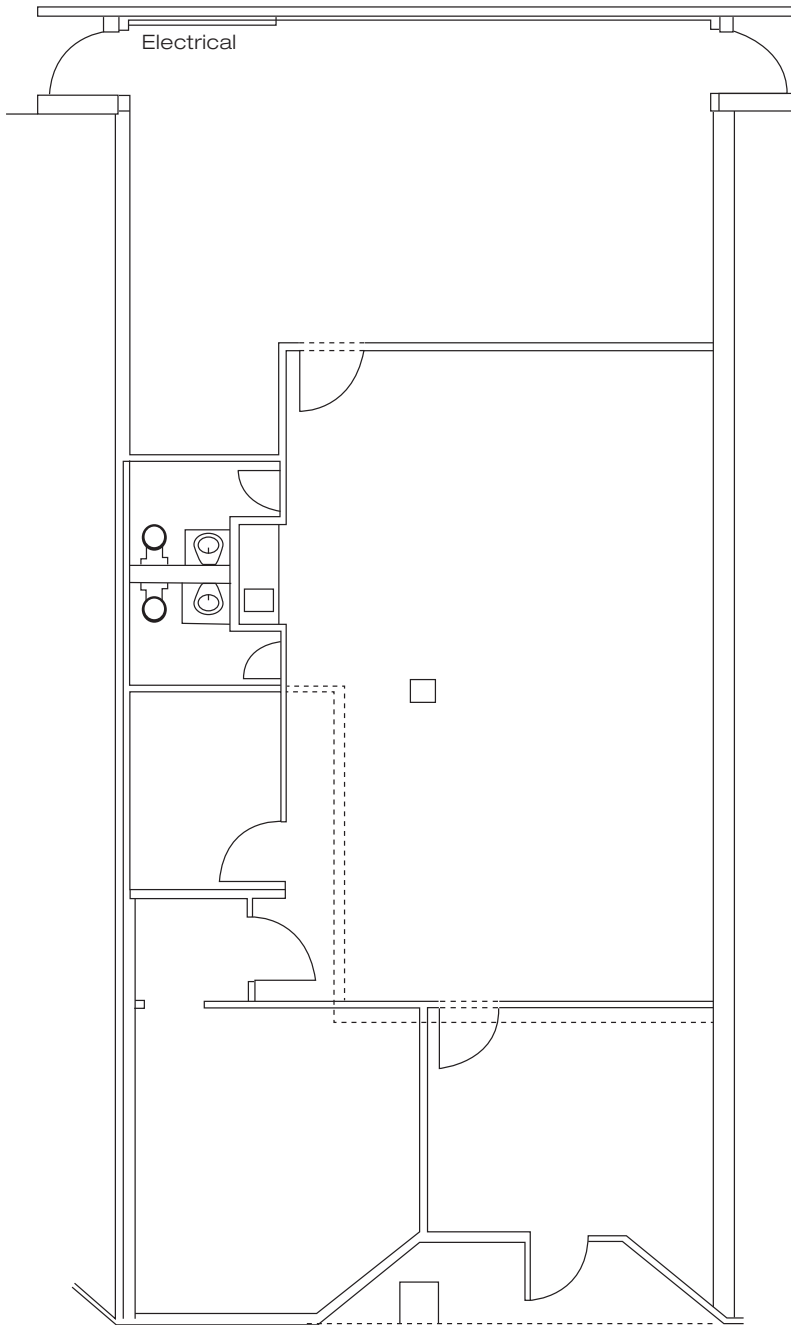


CONTACT US

Carter Thurmond | 713.490.3784 | carter.thurmond@transwestern.com  
Jude Filippone | 713.270.3318 | jude.filippone@transwestern.com

# WESTCHASE PARK

FOR LEASE: 2,173 SF Office Space



## Floor Plan

### BUILDING FEATURES

- 14'-0" Average clear height
- Separate parking and loading areas
- 100% Office

PROJECT OF



LEASING BY



CONTACT US

**Carter Thurmond** | 713.490.3784 | [carter.thurmond@transwestern.com](mailto:carter.thurmond@transwestern.com)  
**Jude Filippone** | 713.270.3318 | [jude.filippone@transwestern.com](mailto:jude.filippone@transwestern.com)