

CHAPEL RIDGE RETAIL CENTER

For Lease



1,200 - 1,665 Sq Ft Spaces Available For Lease

I-470 & NE Woods Chapel Road (SWQ) | 3680 NE Akin Drive, Lee's Summit, Missouri



Estimated Population
105,487

Average Household Income
\$83,760

Five Mile Radius

- 35,000 +/- Sq Ft neighborhood retail center
- Just west of Price Chopper and south of CVS Pharmacy
- Join Total Body Fitness, Allstate Insurance, Foxy Nails, Quilter's Station, KC Salt Mines, Jimmy Johns and more
- Intersection carries over 76,000 cars per day

BLOCK & COMPANY, INC., Realtors 816.753.6000
In the Skelly Building on the Country Club Plaza
605 West 47th Street, Suite 200, Kansas City, Missouri 64112

For Information Contact:

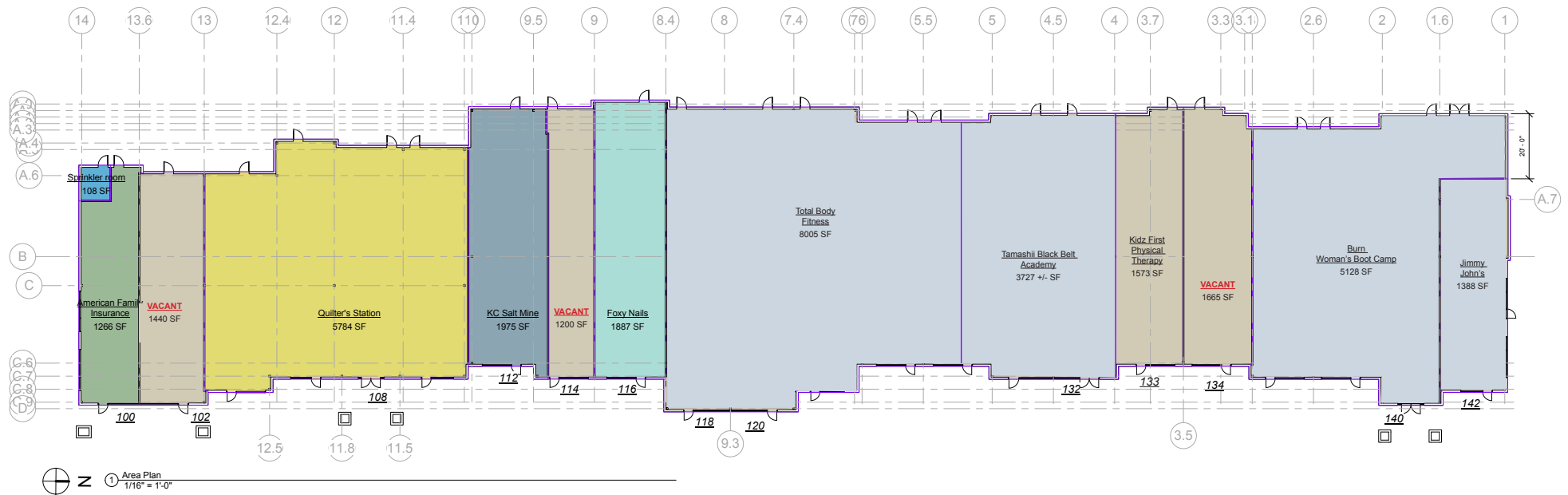
William Glasgow
816.412.7394
wglasgow@blockandco.com

CHAPEL RIDGE RETAIL CENTER
I-470 & NE Woods Chapel Road (SWQ) | 3680 NE Akin Drive, Lee's Summit, Missouri



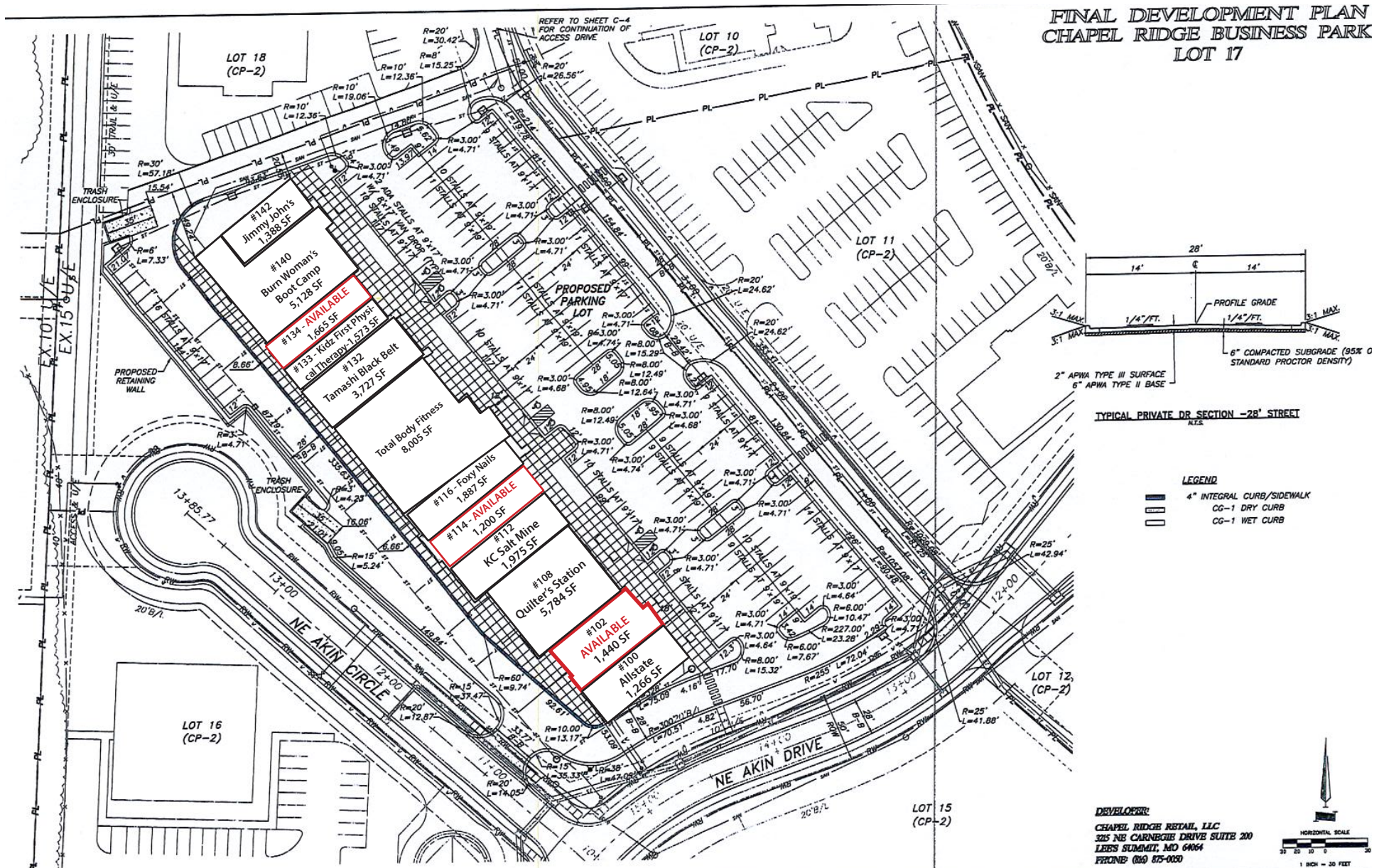
CHAPEL RIDGE RETAIL CENTER

I-470 & NE Woods Chapel Road (SWQ) | 3680 NE Akin Drive, Lee's Summit, Missouri

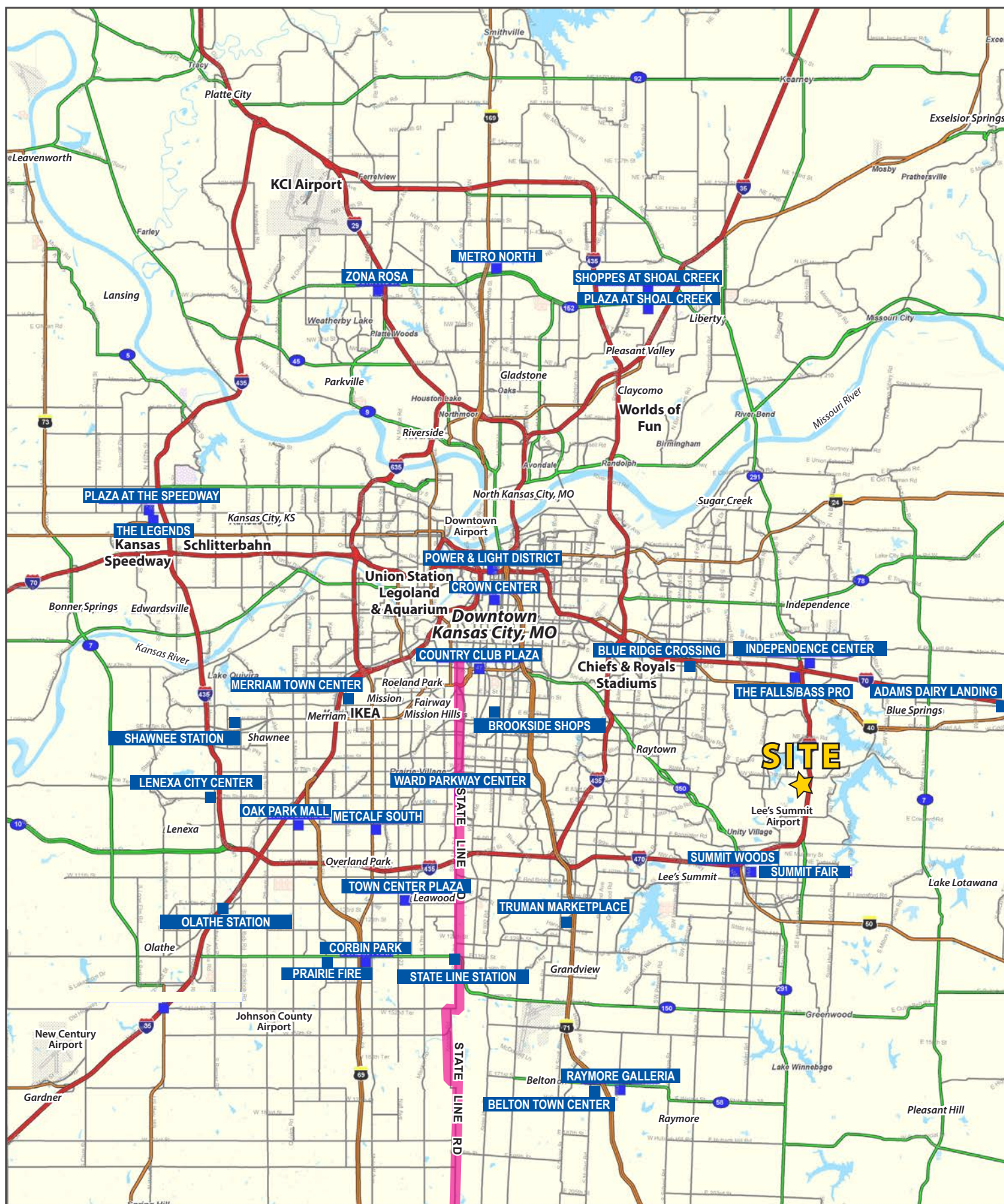


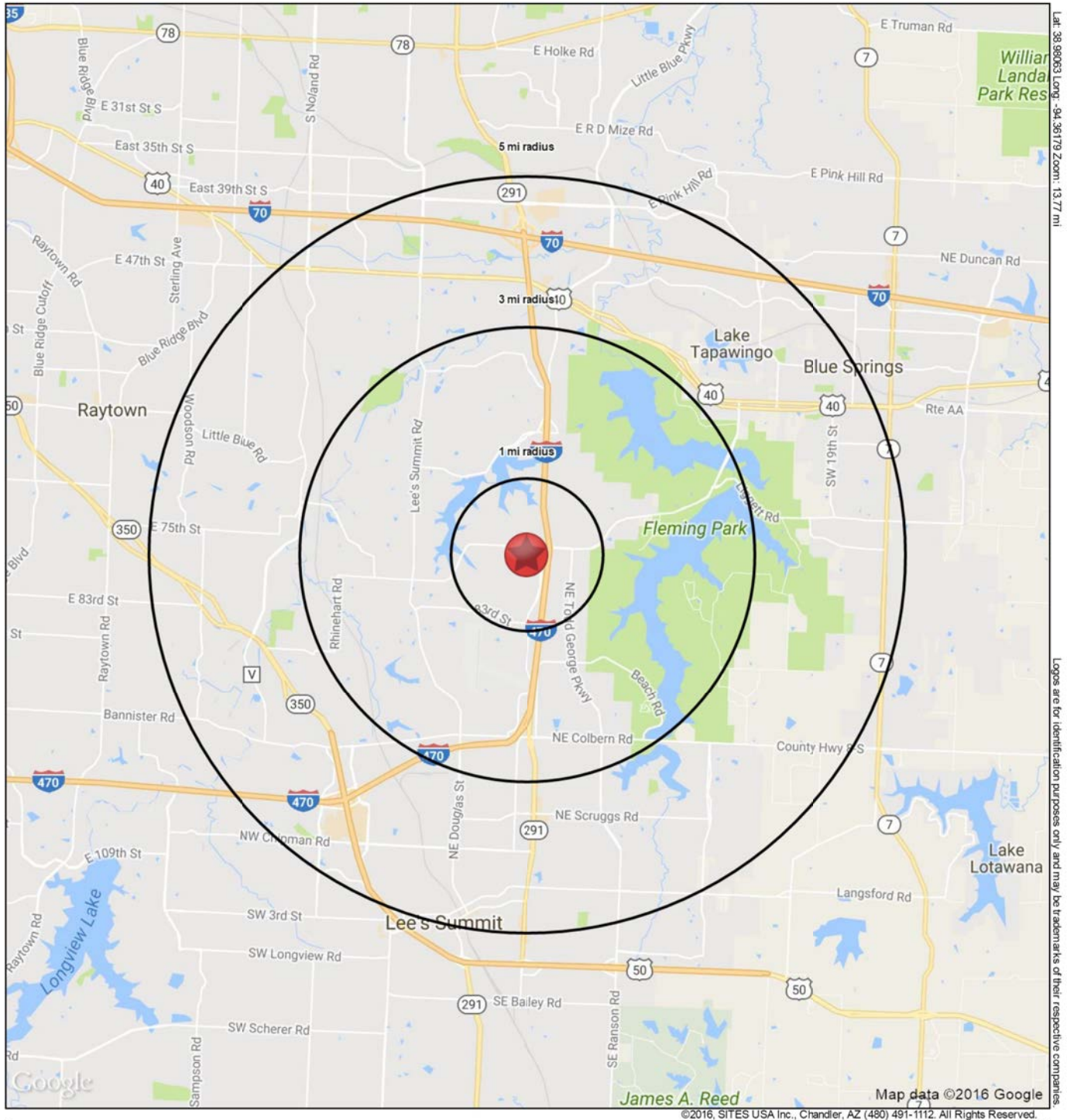
CHAPEL RIDGE RETAIL CENTER

I-470 & NE Woods Chapel Road (SWQ) | 3680 NE Akin Drive, Lee's Summit, Missouri



Greater Kansas City Metropolitan Area | Locator Map





3680 NE Akin Drive
Lee's Summit, MO 64064

November 2016

This map was produced using data from private and government sources deemed to be reliable. The information herein is provided without representation or warranty.

SUMMARY PROFILE

2000-2010 Census, 2017 Estimates with 2022 Projections

Calculated using Weighted Block Centroid from Block Groups

Lat/Lon: 38.9806/-94.3617

RS1

3680 NE Akin Drive

Lee's Summit, MO 64064

1 mi radius 3 mi radius 5 mi radius

POPULATION	2017 Estimated Population	6,030	20,772	105,487
	2022 Projected Population	6,133	21,140	107,002
	2010 Census Population	5,686	19,687	102,552
	2000 Census Population	4,351	14,666	91,653
	Projected Annual Growth 2017 to 2022	0.3%	0.4%	0.3%
	Historical Annual Growth 2000 to 2017	2.3%	2.4%	0.9%
	2017 Median Age	41.5	39.9	39.3
HOUSEHOLDS	2017 Estimated Households	2,360	7,845	42,898
	2022 Projected Households	2,443	8,123	44,201
	2010 Census Households	2,164	7,234	40,662
	2000 Census Households	1,600	5,246	35,001
	Projected Annual Growth 2017 to 2022	0.7%	0.7%	0.6%
	Historical Annual Growth 2000 to 2017	2.8%	2.9%	1.3%
RACE AND ETHNICITY	2017 Estimated White	78.9%	83.4%	82.9%
	2017 Estimated Black or African American	15.4%	10.5%	10.5%
	2017 Estimated Asian or Pacific Islander	1.8%	2.6%	1.9%
	2017 Estimated American Indian or Native Alaskan	0.3%	0.2%	0.3%
	2017 Estimated Other Races	3.7%	3.2%	4.3%
	2017 Estimated Hispanic	3.0%	3.2%	4.9%
INCOME	2017 Estimated Average Household Income	\$96,142	\$111,109	\$83,760
	2017 Estimated Median Household Income	\$84,987	\$94,133	\$71,276
	2017 Estimated Per Capita Income	\$37,792	\$42,061	\$34,115
EDUCATION (AGE 25+)	2017 Estimated Elementary (Grade Level 0 to 8)	0.7%	0.8%	1.4%
	2017 Estimated Some High School (Grade Level 9 to 11)	1.6%	2.0%	4.1%
	2017 Estimated High School Graduate	21.5%	17.8%	24.9%
	2017 Estimated Some College	27.5%	24.1%	25.6%
	2017 Estimated Associates Degree Only	9.2%	9.3%	8.5%
	2017 Estimated Bachelors Degree Only	21.5%	27.4%	22.6%
	2017 Estimated Graduate Degree	17.9%	18.7%	12.9%
BUSINESS	2017 Estimated Total Businesses	353	945	4,860
	2017 Estimated Total Employees	3,573	10,214	63,537
	2017 Estimated Employee Population per Business	10.1	10.8	13.1
	2017 Estimated Residential Population per Business	17.1	22.0	21.7

This report was produced using data from private and government sources deemed to be reliable. The information herein is provided without representation or warranty.