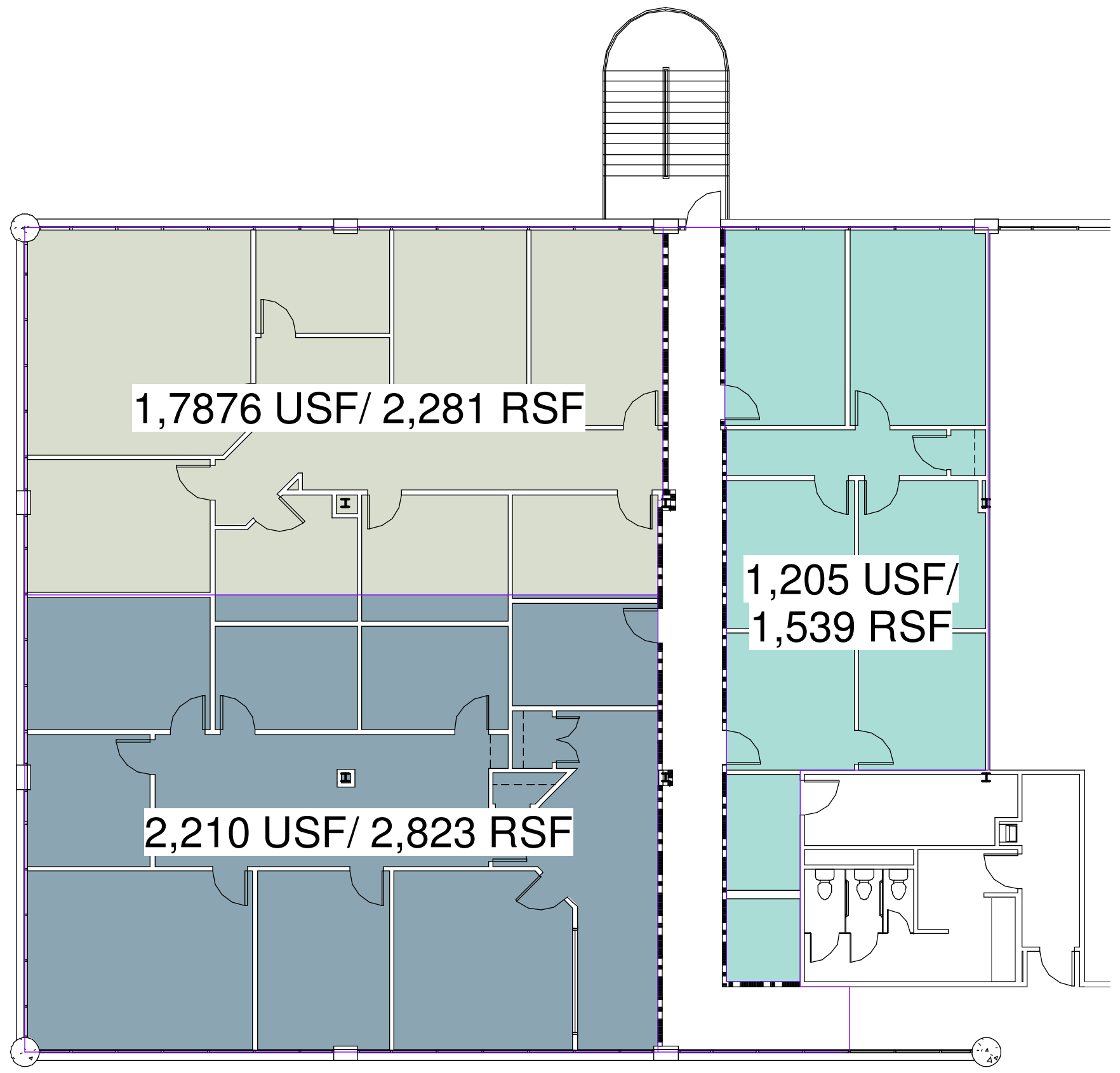


ALL DESIGN, ARCHITECTURE AND PLANS OF THIS DRAWING ARE OWNED BY AND THE PROPERTY OF HUGHES TURNER PHILLIPS ASSOCIATES, L.L.C. AND RECREATED AND DEVELOPED FOR USE ON AND CONNECTION WITH THIS PROJECT. ANY OF SUCH LEGAL DESIGN ARRANGEMENTS OR PLANS SHALL BE USED BY OR DISCLOSED TO ANY FIRM, PERSON OR COMPANY FOR ANY PURPOSE WITHOUT THE WRITTEN PERMISSION OF HUGHES TURNER PHILLIPS ASSOCIATES, L.L.C. AN GENERAL CONDITIONS, LATEST EDITIONS, SHALL PREVAIL ON ALL WORKING DRAWINGS, DETAILS, PLANS, AND/OR SPECIFICATIONS. HUGHES TURNER PHILLIPS ASSOCIATES, L.L.C. 2015 CHAMBERLAIN PROPERTIES SUITE 300 ATLANTA, GA 30329 404.331.3331 FAX 404.331.1768



1 Suite 202 Split
3/32" = 1'-0"

6,643 RSF

SHEET NUMBER: A-1.01
PROJECT #: 65101517
DATE: 11 Jan 17
SCALE: 3/32" = 1'-0"
DRAWN BY: TLF

CLIENT: Magellan Properties, Inc
Proposed Corridor

PROJECT: Suite 202
40 Technology Parkway South NW
Peachtree Corners, GA 30092