

FOR LEASE | MEDICAL OFFICE BUILDING



19231 VICTORY BLVD.

RESEDA | CA



ANGIE WEBER

First Vice President
+1 818 502 6750
angie.weber@cbre.com
Lic. 01015031

DANA NIALIS

Senior Associate
+1 818 502 6774
dana.nialis@cbre.com
Lic. 01947265

CBRE

PROPERTY HIGHLIGHTS



Ground Floor Medical Space Available



Potential Full Floor Available



Building Signage Available



West Valley Medical Plaza is Anchored by Walgreens and Yogurtland



Direct Access to 101 Freeway

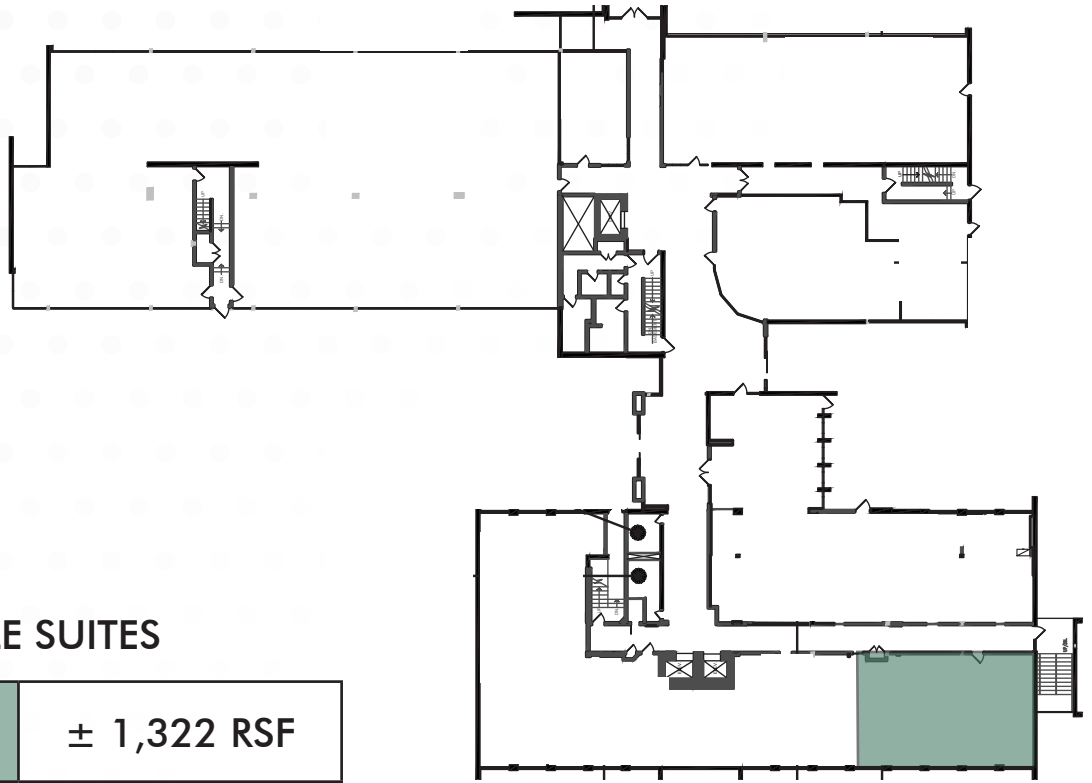


Shell Space for Build-to-Suit



AVAILABLE SPACE

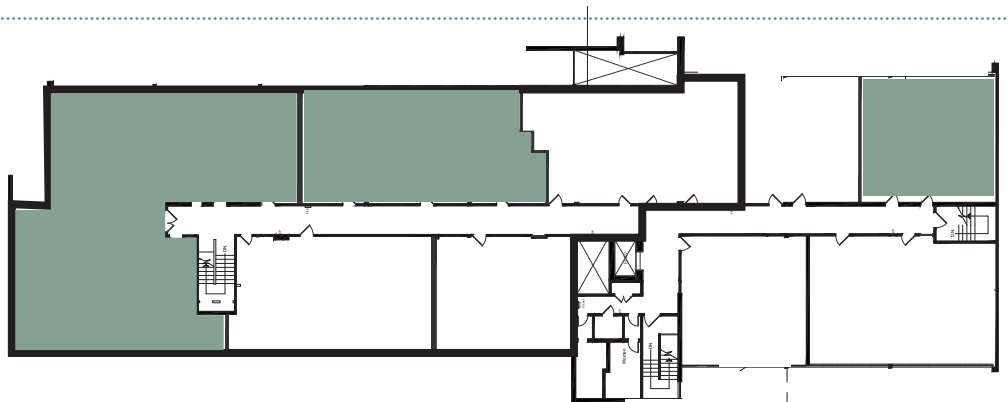
1



AVAILABLE SUITES

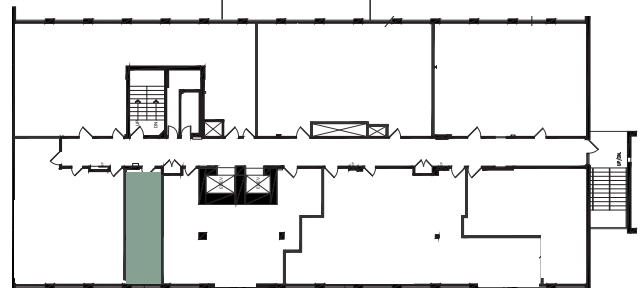
Suite 151	± 1,322 RSF
-----------	-------------

2



AVAILABLE SUITES

Suite 200	± 1,035 RSF
Suite 212	± 8,856 RSF
Suite 255-B	± 258 RSF



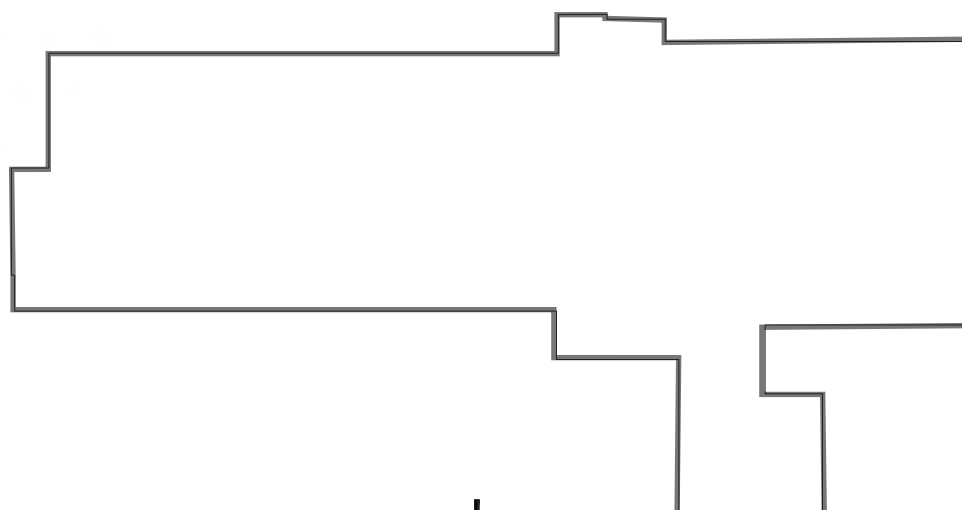
AVAILABLE SPACE



3

AVAILABLE SUITES

Suite 353	± 498 RSF
Suite 356	± 633 RSF

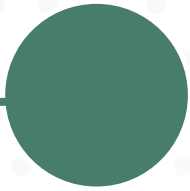


4

AVAILABLE SUITES

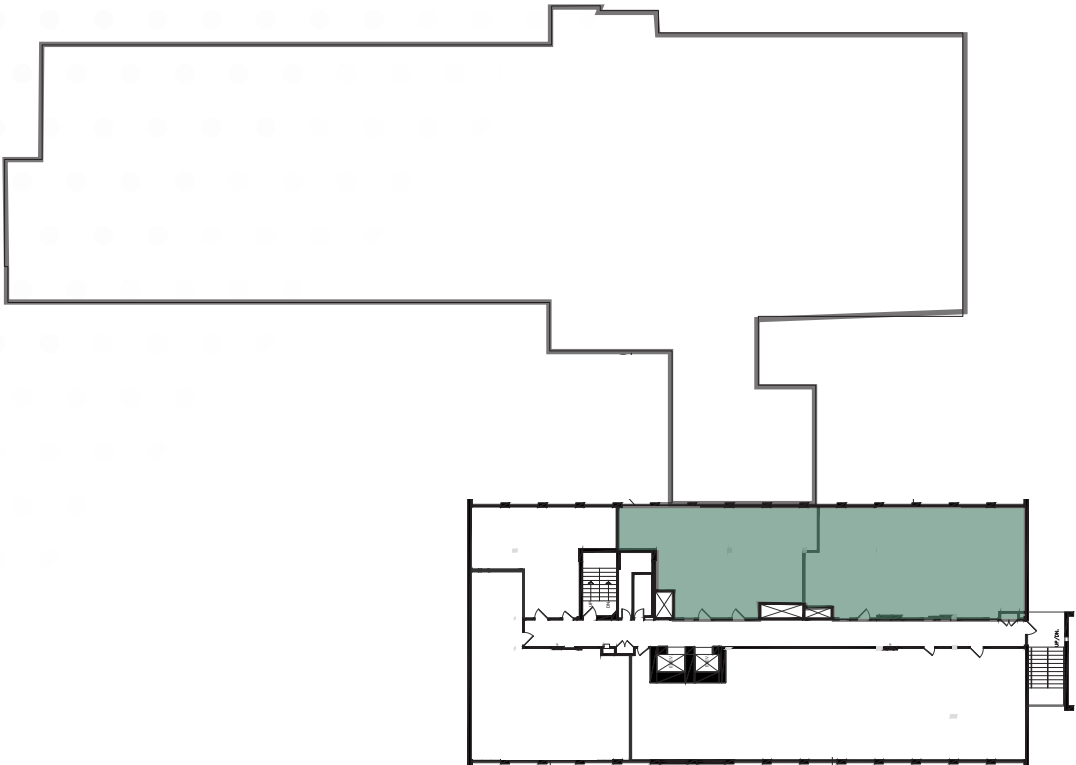
Suite 453	± 1,017 RSF
-----------	-------------





AVAILABLE SPACE

5



AVAILABLE SUITES

Suite 550	± 1,494 RSF*
Suite 554	± 1,119 RSF*

*Contiguous ±2,613 RSF

FOR LEASE | MEDICAL OFFICE BUILDING



19231 VICTORY BLVD.

RESEDA | CA

CONTACT US:

ANGIE WEBER

First Vice President
+1 818 502 6750
angie.weber@cbre.com
Lic. 01015031

DANA NIALIS

Senior Associate
+1 818 502 6774
dana.nialis@cbre.com
Lic. 01947265

CBRE
Broker Lic. 00409987

© 2018 CBRE, Inc. All rights reserved. This information has been obtained from sources believed reliable, but has not been verified for accuracy or completeness. You should conduct a careful, independent investigation of the property and verify all information. Any reliance on this information is solely at your own risk. CBRE and the CBRE logo are service marks of CBRE, Inc. All other marks displayed on this document are the property of their respective owners. Photos herein are the property of their respective owners. Use of these images without the express written consent of the owner is prohibited.